



# NGI Education at the Dauphin Island Sea Lab Estuarium

Mendel Graeber, Tina Miller-Way

# Boardwalk Talks

- What are Boardwalk Talks?
- What are the benefits of the program?
  - Increased Gulf of Mexico awareness
  - Forum for discussing current research
  - Increased professional science translation

The Northern Gulf Institute presents an informal conversation about all things scientific in the Gulf region . . .

## BOARDWALK

Wednesdays at 11:15

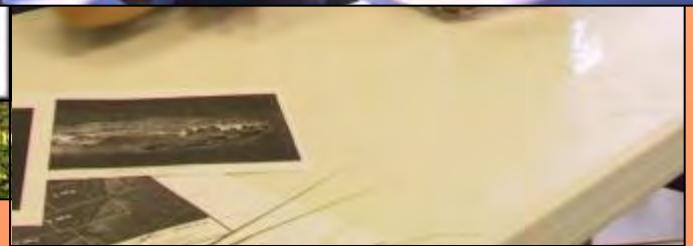
*This week's presentation:*

### SALT MARSHES: MORE THAN MUD AND MUCK

Hosted by Eric Sparks, PhD Student  
Wednesday, March 2, 2011

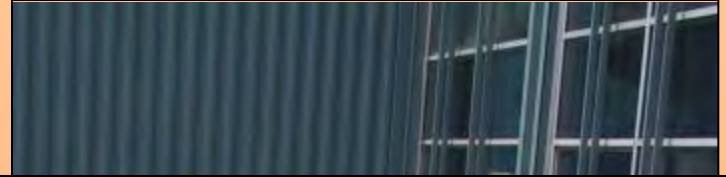
Salt marshes are an integral part of coastal systems for many reasons. We will discuss several aspects of marshes including services provided, current and recent research and common marsh plant identification. Learn how salt marshes help sustain healthy ecosystems without getting muddy (unless you really want to).

Meet outside the front doors. See you there!  
Talk lasts approximately 20 minutes.



# Boardwalk Talks

- How many have benefitted from this program?
  - 44 hosts presented 49 different topics
  - 1306 participants total, for an average of 22 per talk
- What's next?





# Summer Excursions

- What are the Summer Excursions?
- What are the benefits of this program?
- How many have benefitted from this program?
  - 2008-2010, 326 participants in 20 excursions



# In the Estuarium

- Hands-on Activities
  - Permanent exhibitry, activity table, mobile station
  - Topics include
    - Oil, watersheds, fisheries, plankton, niches, sand, animal morphology, tagging, and more
  - Number of visitors
    - An average of 65,000 visitors annually
  - What's next?



# Beyond the Estuarium

- Outreach
  - Venues
    - Public festivals, camps, schools
  - Where?
    - Alabama and Mississippi
  - Topics include
    - Watershed issues, estuaries, salt marshes, animal morphology, oil spills, and more
  - Number of people
    - Collectively, thousands



